

# GUN & HOUSEHOLD AUCTION

**SATURDAY, MAY 2 @ 9:00 AM**  
**(At the Barn)**

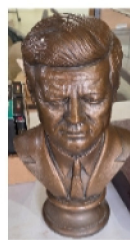
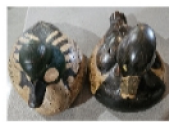
**LOCATION: 4019 LAWRENCE 1250**  
**ASH GROVE, MO 65604**

**DIRECTIONS: FROM SPRINGFIELD, WEST ON I-44 TO EXIT 61 (Hood's Truck Stop). NORTH ON K HWY (1/2 mile) TO HWY 266, WEST OR LEFT ON 266 (2 miles) TO FARM RD 11 / LAWRENCE 1250. NORTH TO AUCTION. OR...FROM MT. VERNON, EAST ON I-44 TO EXIT 58 (Halltown) TO HWY 266, EAST ON 266 (1 mile) TO LAWRENCE 1250 / FR 11, NORTH (1.5 miles) to AUCTION. (FOLLOW SIGNS TO AUCTION BARN)**

**AUCTIONEERS NOTE: PLEASE NOTE SALE DATE & TIME! Lots of Guns, Ammo & Accessories in This Sale! Background Checks Apply. Something Here for Everyone! Sale is Inside. Lunch Available, Plenty of Parking. Plan to Spend the Entire Day!!**

## GUNS - AMMO - ACCESSORIES (Sell After Household Items)

- 12 Ga. Browning Field Model
- 12 Ga. Mag Marlin Model 120
- 16 Ga. Browning
- 12 Ga. Browning
- 410 Winchester Model 42
- .270 Winchester Model 700
- 4.5 Gamo Varmint Air Rifle
- .22 Ruger 10/22 Carbine
- 30.06 Mauser Model 1938
- 50 Cal. Apollo (Conn Valley Arms)
- 50 Cal. Traditions Thunderbolt
- 50 Cal. BPI CVA Staghorn
- 50 Cal. Traditions Buckmaster Pro
- 12 Ga. Winchester Model 1912
- 12 Ga. Winchester Model 12
- 20 Ga. Winchester Model 12
- 20 Ga. Remington 870 Express Magnum
- 12Ga. Winchester Model 1400 MKII
- .22 Remington Model 12
- .45 Colt Inter Arms (Amadeo Rossi S.A.) 92 SRC
- .22 Remington 510 Target Master
- 16 Ga. Winchester Model 12
- .22 Winchester Model 74
- 50 Cal. U.S. Springfield
- 45 Cal. U.S. Springfield
- .223 Colt Firearms Division AR15 Model SPI
- .45 Colt Peacemaker
- .22 S&W Carl Walther ULM / DO
- .357 JP Sauer & Son
- .245 Unknown (No Name)
- .22 Colt Frontier Scout
- .357 Mag S&W Model 586 (AEM5596)
- 50 Cal. Jukar
- .44 WCF Model WCF
- .45 Cattleman SA
- 20 Ga. Winchester (Barrel w/ Trigger)
- .177 Stoeger Pellet
- .22 Marlin Golden 39A
- .22 Ruger 10/22 Carbine
- 30.06 Remington SPRG Model 700
- 11-48-28 Ga. Remington Model AKLL
- 20 Ga. Winchester Model 37
- 12 Ga. Browning Auto
- .22 Winchester Model 77
- .177 Crossman Model 1077
- Sportsman RS2 Series
- .308 Win. Mossberg 100 ATR
- .22 Henry Model H001
- Breta Bresca (Made In Italy)
- 30.30 Marlin Model 336
- .45 Colt Auto
- Daisy Red Rider BB Gun
- 30.06 Remington Mauser Sporter



- 6.5 Stevens 334 Creedmore
  - 25.06 Savage Axis
  - .243 Stevens 334
  - 30.06 Remington 783
  - 12 Ga. H&R Topper
  - .243 Savage Model 11
  - .270 Savage Model 110
  - .270 Savage Model 110
  - 30.06 Thompson Center Compass
  - 30.30 Springfield Model 840
  - .270 Savage Model 110
  - 50 Cal. Knight Vision
  - 30.06 Remington 742
  - 12 Ga. Wimberly Arms Semi Auto
  - .22 H&R Rough Rider
  - .22 H&R Rough Rider
  - 9mm Hi-Point C9
  - .380 Hi-Point CF
  - .38 Special Armsor Model 206
  - .22 H&R Rough Rider
  - .40 Hi-Point Model JCP S&W
  - .22 H&R Rough Rider
  - .22 H&R Rough Rider
  - 50 Cal. Knight
  - 7mm Oviedo Fabrica De Armas 1900
  - .177 Crossman, .177 Ruger
  - .22 Ruger Pellet, Scopes
  - Num. Ammo, Compound Bows
  - Knives, Wrist Watches
  - Bayonets, Swords
  - Ammo Boxes, Sleeping Bags
  - Poly & Cloth Gun Cases
- This is Only a Partial List!!**  
**Lots of Accessories!**



## HOUSEHOLD - COLLECTIBLES

- Pots, Pans, Dishes, Glassware
  - Kitchen Utensils, Flatware
  - Num. Sm. Electric Appliances
  - Tupperware, Budweiser Clock
  - Civil Was Chest Set, Comic Books
  - Nascar Items, Hot Wheels
  - Kennedy Bust, African Folk Art
  - (3) Concrete Gargoyles
  - Native American Items, Linens
  - Ducks Unlimited, Framed Pictures
  - Electronic Items, Books, DVD'S
  - Office Supplies, Kerosene Lamps
  - Directors Chairs, Box & Floor Fans
  - Num. Upright Sweepers
  - Various Name Brand Clothing
- Lots of Miscellaneous Items!!**

**OWNERS:**

**GEDERS - DARLING - L. BINGHAM - STOVALL & OTHERS**

**TERMS: Everything Sells "AS IS," "WHERE IS". Cash or Good Check w/ Proper ID. (Out of State Buyer's Cashiers Check or Letter of Credit). Neither Foreman Auction Service or Owners Shall be Responsible for Accidents or Loss of Items. Announcements Day of Sale Take Precedence Over all Printed Material. 3% Convenience Fee on all Credit Cards. 50% Deposit on Any Absentee Bids! ALL SALES FINAL!!**



# FOREMAN AUCTION SERVICE

[WWW.FOREMANAUCTION.COM](http://WWW.FOREMANAUCTION.COM)

406 N. Farm Road 11  
Ash Grove, MO 65604

**417.839.0071**



**ESTATES - REAL ESTATE - ANTIQUES - COLLECTIBLES - FIREARMS - BUSINESS LIQUIDATIONS - FARMS - EQUIPMENT - MACHINERY - INDUSTRIAL**