

AUCTION

TUESDAY JUNE 30, 2026 @ 9:00 AM
(At the Barn)

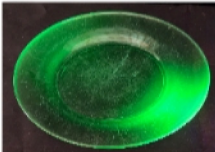
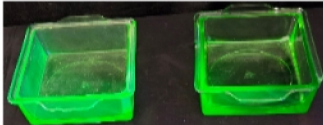
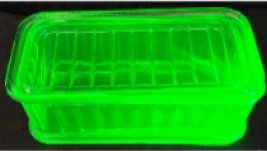
LOCATION: 4019 LAWRENCE 1250
ASH GROVE, MO 65604

DIRECTIONS: FROM SPRINGFIELD, WEST ON I-44 TO EXIT 61 (Hood's Truck Stop). NORTH ON K HWY (1/2 mile) TO HWY 266, WEST OR LEFT ON 266 (2 miles) TO FARM RD 11 / LAWRENCE 1250. NORTH TO AUCTION. OR...FROM MT. VERNON, EAST ON I-44 TO EXIT 58 (Halltown) TO HWY 266, EAST ON 266 (1 mile) TO LAWRENCE 1250 / FR 11, NORTH (1.5 miles) to AUCTION. (FOLLOW SIGNS DAY OF AUCTION TO AUCTION BARN)

AUCTIONEERS NOTE: PLEASE NOTE SALE DATE & TIME! Very Clean Sale w/ Very Nice Items and Collectibles!! Not Able to Make an Accurate List at Time of Listing Sale. The Building is Full!! Lunch Available, Plenty of Parking. Plan to Spend the Entire Day!

FURNITURE - HOUSEHOLD - COLLECTIBLES

- Chest Freezer
- Kenmore Dryer
- Microwave
- (2) Rd Wooden Tables, 6 Chairs, 2 Leaves
- Two Piece China Hutch
- Entertainment Cabinet
- Upholstered Lift Chair
- Num. Beds
- Leather Sofas
- Upholstered Chairs
- Sofa Table
- Glider Rocker
- Wooden Chairs
- Wooden Cabinet
- Wooden Rocker
- End Tables
- Sm. Wooden Cabinets
- Wooden Desk
- Electric Fireplace
- Lg. Wicker Couch
- Vintage Dresser
- Pots, Pans, Dishes, Glassware
- Vaseline Glass
- Cartoon Glasses, Dish Sets
- Sm. Electric Appliances
- Kitchen Utensils
- Flatware, Lg. Vases
- Corning Ware, Sm. Crock
- Some Tupperware (New)
- 50's Canister Set
- 50's Kitchen Step Stool
- Mantle Clock, Sm. Clocks
- Figurines, Metal Picnic Basket
- Electric Lamps, Framed Pictures
- Wall Mirrors, Wall Gun Rack
- Foot Locker Trunk, Wheelchair
- Brother Portable Sewing Machine
- Sewing Notions
- Linens, Blankets, Bedding
- Stetson Hat (In Box)
- Woven Baskets
- Costume Jewelry
- Num. Coins
- 1890 Morgan Dollar, Mint CC
- Arrow Heads
- Books, Yardsticks
- Vintage Record Albums



- Decca Records
- Sheet Music
- Miscellaneous Toy Train Items
- Vintage Board Games
- Artificial Flowers, Plants
- Decorative Decor
- Plastic Milk Crates
- Sm. Pet Carrier, Coolers
- Electric Light Fixtures (New in Box)
- Wood Stain (Never Opened)
- Bosch Hand Grinder (New)
- Num. Door Hardware (New)
- Christmas Items
- This is Only a Partial List!!**
- The Building is Full!!**
- Plan to Spend the Day!!**
- PLEASE NOTE SALE DATE & TIME**



OWNERS:
CRADY, HOGUE, KING & OTHERS

TERMS: Everything Sells "AS IS," "WHERE IS". Cash or Good Check w/ Proper ID. (Out of State Buyer's Cashiers Check or Letter of Credit). Neither Foreman Auction Service or Owners Shall be Responsible for Accidents or Loss of Items. Announcements Day of Sale Take Precedence Over all Printed Material. 3% Convenience Fee on all Credit Cards. 50% Deposit on Any Absentee Bids! ALL SALES FINAL!!



FOREMAN AUCTION SERVICE

WWW.FOREMANAUCTION.COM

406 N. Farm Road 11
Ash Grove, MO 65604

417.839.0071



ESTATES - REAL ESTATE - ANTIQUES - COLLECTIBLES - FIREARMS - BUSINESS LIQUIDATIONS - FARMS - EQUIPMENT - MACHINERY - INDUSTRIAL